

JULIUS CAESAR

CINCINNATI SHAKESPEARE COMPANY

Selected Process Material

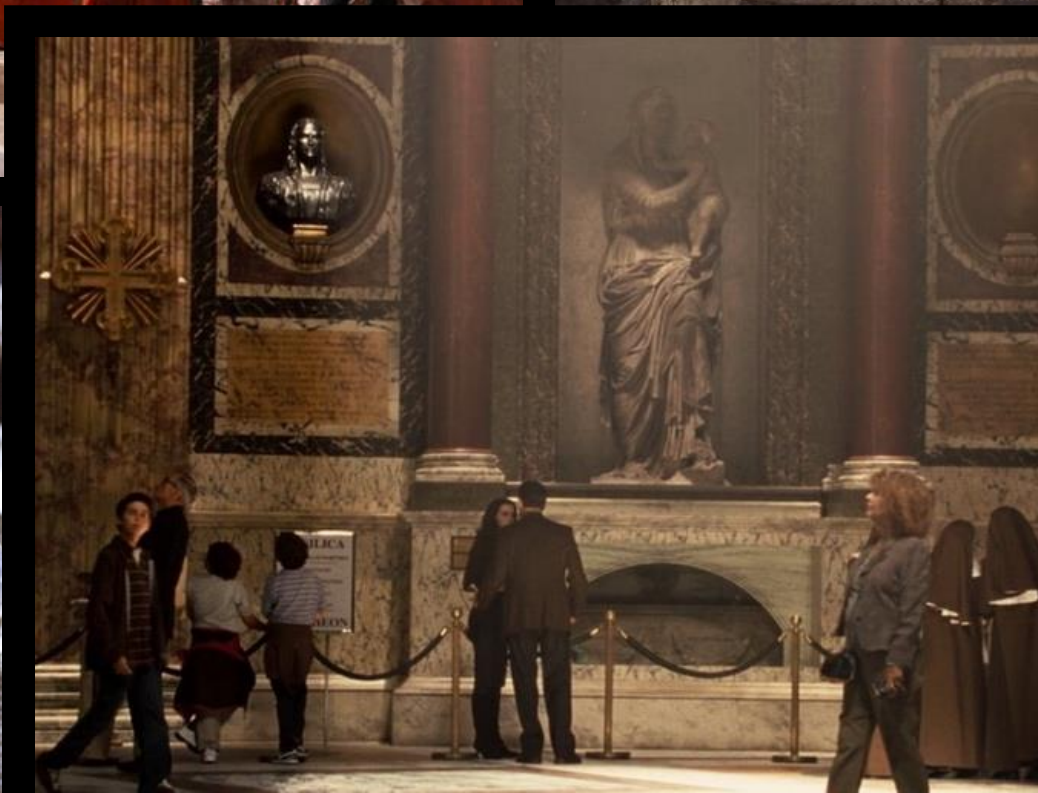
RELEVANT IMAGERY







alamy



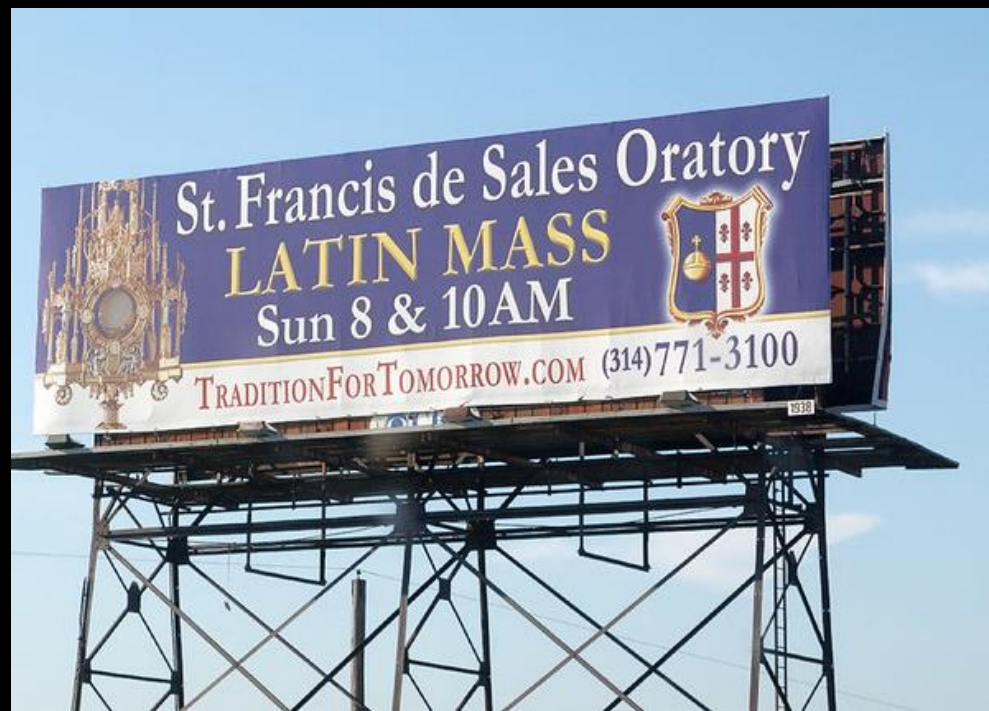








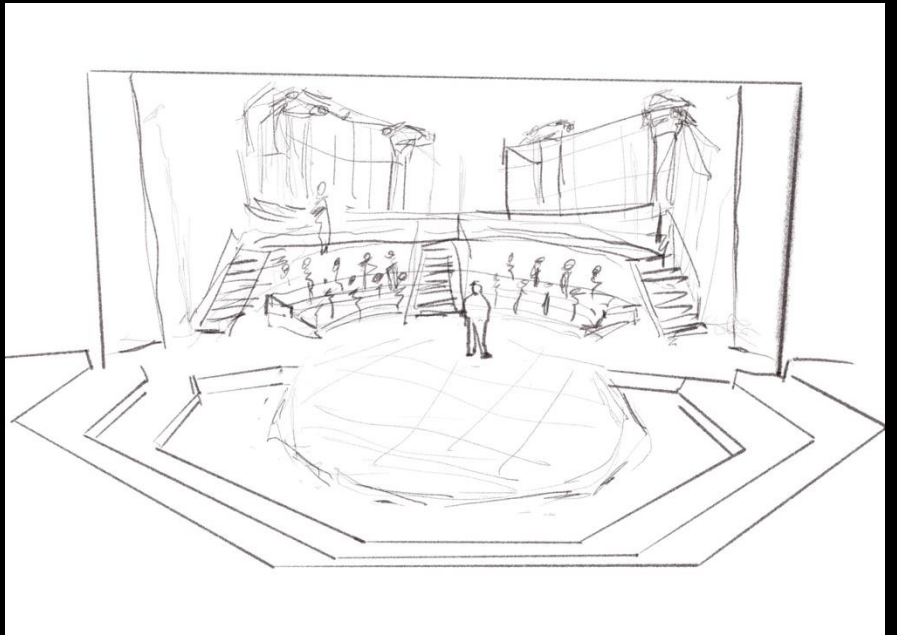
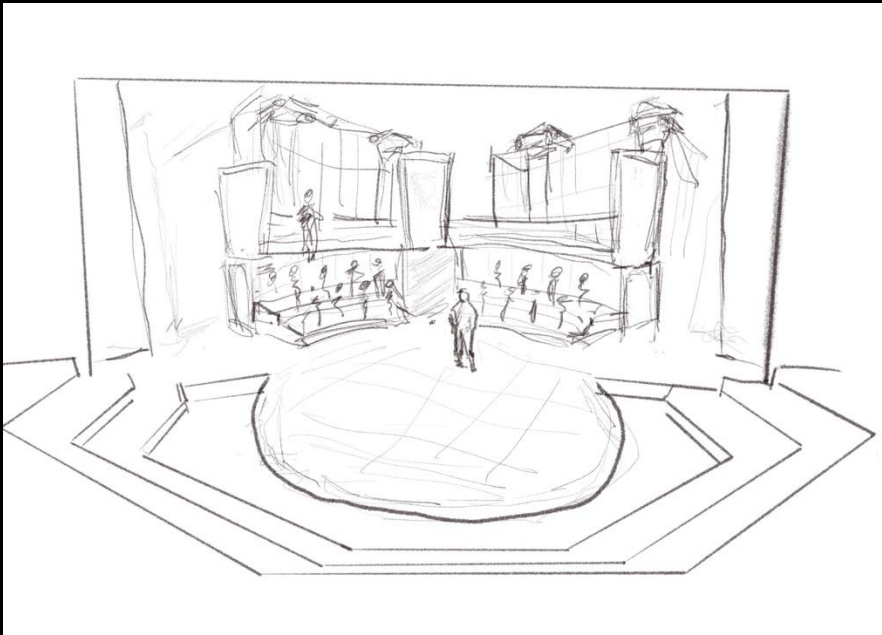
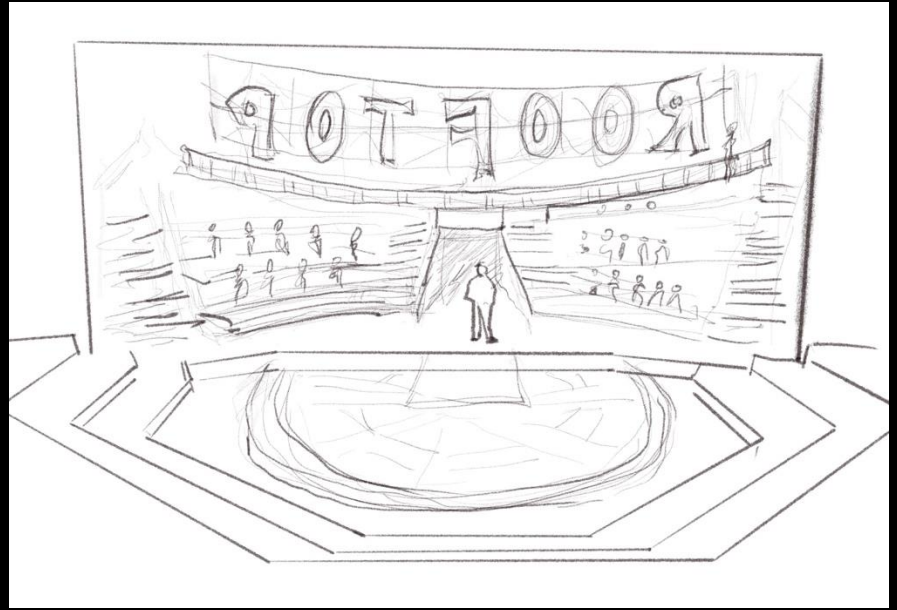
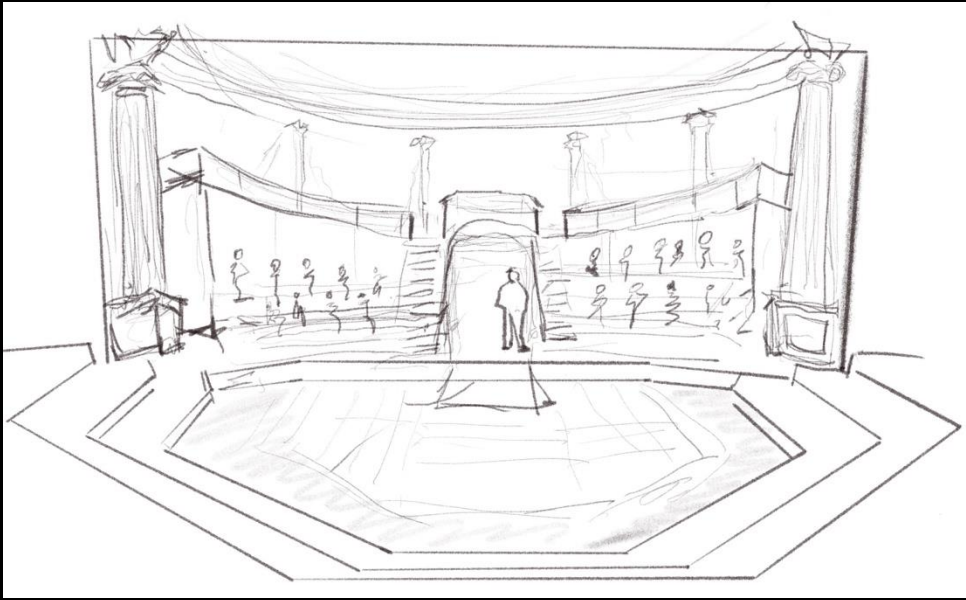
alamy - KK3H81

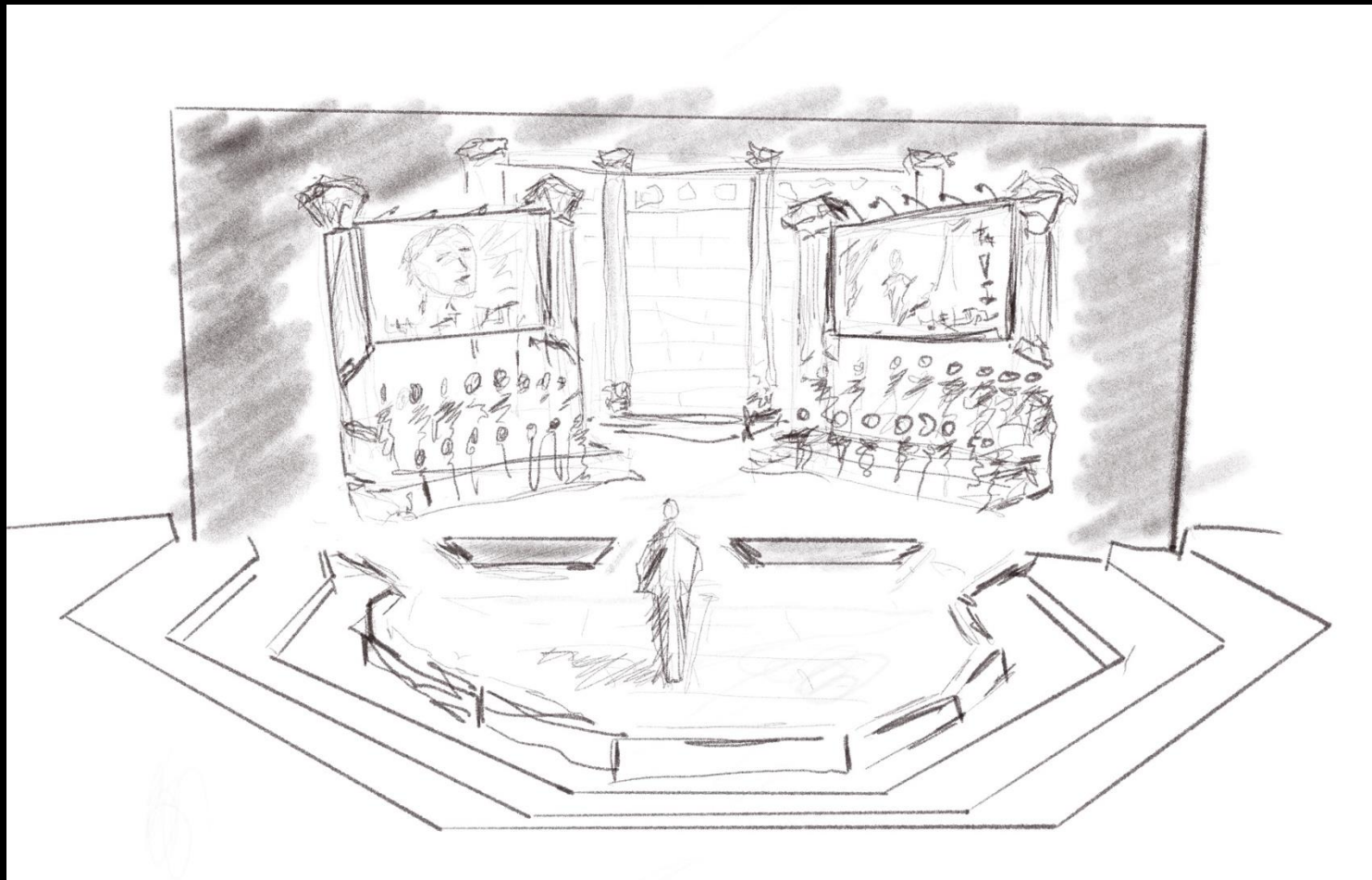






ROUGH SKETCHES

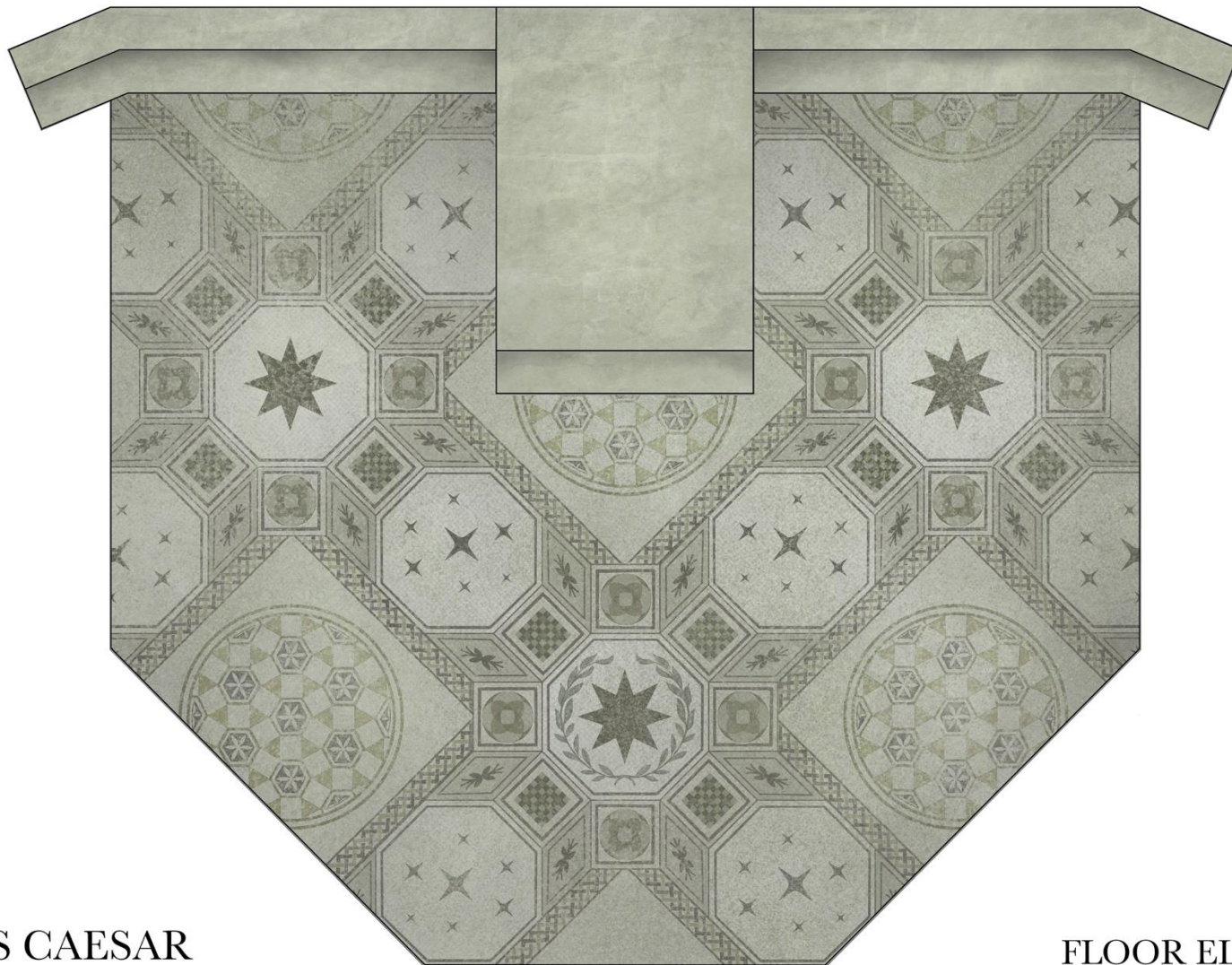




MODELING



PAINT ELEVATIONS

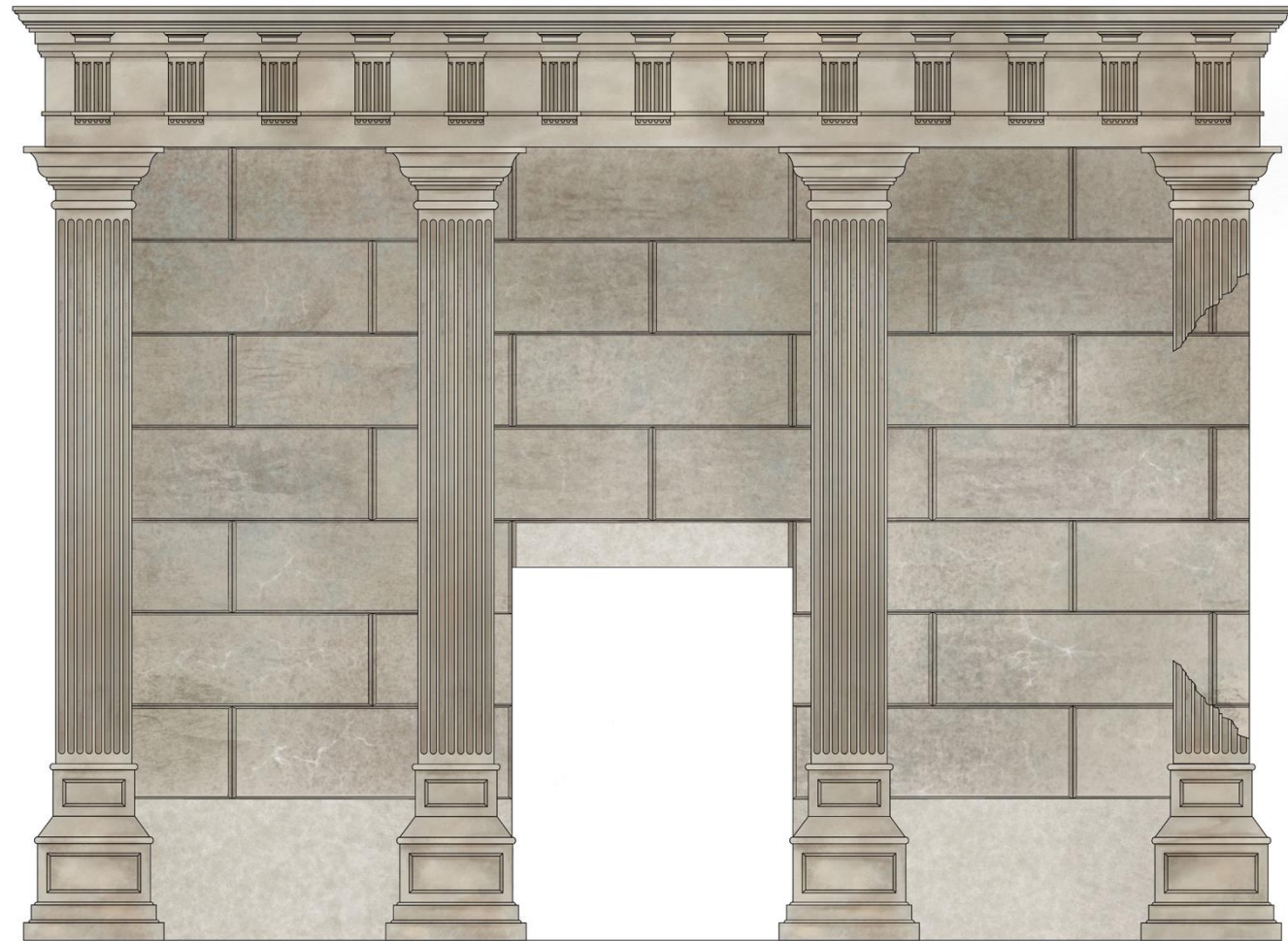


JULIUS CAESAR

CINCINNATI SHAKESPEARE COMPANY

FLOOR ELEVATION

SCALE: 1/2" = 1'-0"



JULIUS CAESAR

CINCINNATI SHAKESPEARE COMPANY

BACK WALL ELEVATION

SCALE: 1/2" = 1'-0"

